

The First Garden of Eden



A 37,000 Year Old Mystery Solved

Commodore Robert Stanley Bates
United States Merchant Marine (Ret.)

Copyright Batek Marine Publishing 2025

Table of Contents

Introduction	3
Textual Sources Supporting the Search.	3
A 37,000 Year Old Mystery Solved	5
Emendation of Mythological Accounts	19
Practical Applications of Our Discoveries . .	21

Introduction

The sophisticated archeological search for the First Garden of Eden has had to wait for our time, with its digital technology and advanced underwater research capabilities. As many *Urantia Book* students know, recent efforts to locate the First Garden culminated in two exciting underwater surveys in the Eastern Mediterranean that were staged in 2004 and 2006—both of which uncovered tantalizing evidence that strongly merits additional inquiry. In this paper, I argue that our search for this pre-historic civilization should be narrowed to sunken land between Syria and the island of Cyprus, a virtual underwater continent that mainstream geologists located decades ago. To support my argument, I offer a digest of our analysis of the marine archeological evidence obtained by our expeditions. This effort produced scientific facts, summarized below, that validate the specific Eastern Mediterranean location we had first identified as the research target. In addition, I will contextualize these new facts with a brief look at the historical evidence that a proto-civilization preceded the known civilizations of the ancient Near East. In the later part of this essay, I correlate our factual evidence with specific statements in *The Urantia Book* in Papers 73 and 74.

Please note that I provide a much more in-depth analysis of our findings in my book, *The Eden-Atlantis Project* (Batek Marine Publishing, 2020) and at our website, <http://edenatlantisproject.org>. In these publications (and in [several films](#)), I believe we have established for the first time that an essential modern source for this research is *The Urantia Book*.

My ultimate objective is to provide an updated explanation, based on almost 20 years of study and reflection, of the data acquired in the two expeditions. I offer this new interpretation because I played a vital part in both efforts, especially as the Expedition Leader of the first effort. In addition, my aim here is to provide a collegial response to a new initiative, called the [Latakia Ridge Research Institute](#), that is also based on Papers 73 and 74. These former associates have identified an alternative target area located in the same region as ours. The founder of this new Institute is Robert Sarmast. Mr. Sarmast was Expedition Leader of the second voyage to this site that was funded and filmed by the History Channel and aired in January 2007 with the title of “Atlantis: New Revelations.” This show was part of a special for the first episode of the 2007 season in a series called “Digging for the Truth.”

In summary, I believe *we have uncovered unmistakable human infrastructure* on this landmass, artifacts that were submerged in the Eastern Mediterranean at a very distant time. To supplement our earlier discoveries, unprocessed data resulting from our 2006 sub-bottom profiler (SBP) survey yielded some unexpected results not previously understood—and notably, these are *new findings I was only able to identify in the last several years*. Our work points to the existence of several large human-built artifacts that survived the violent tectonic plate activity and extensive flooding that occurred in in this area in pre-historic times. Along with our newer interpretations of the data, our discoveries point significantly to the need for a third expedition to this site.

Textual Sources Supporting the Search

I am aware, of course, that for most observers the idea of a Garden of Eden is little more than mythic narrative passed down from pre-modern times. However, what was once considered myth can become real history if compelling new scientific evidence is uncovered, or if an authoritative revelatory text such as *The Urantia Book* is used to provide guidance to researchers. In this paper I contend that the biblical legend of Eden, along with even more ancient accounts such as those found in Sumerian tablets, are indeed different versions of the same narrative. These texts point to the true story of a real primeval civilization now updated by the Urantia revelation, which clearly states that this civilization was originally located on a peninsula that sank beneath the sea in prehistoric times in the Eastern Mediterranean. (Please note: I provide in-depth analysis of these ancient texts in chapter 1 of my book, *The Eden-Atlantis Project*.)

Let us then turn to *The Urantia Book* (1955) itself. You'll recall that papers 73 and 74 purport to describe the actual Garden of Eden, depicting both the physical site and its unique inhabitants in unprecedented detail. Here we learn that Eden was home for an exceptional man and woman of off-planet origin named Adam and Eve, who dwelled there with their progeny of hundreds of "pure-line" children. The Adam and Eve of the Bible were known to be the "parents of humankind," but we learn from the revelators that their chief purpose for incarnating here was to act as "biological uplifters" of the then existing peoples of the Earth—or *Urantia*. This epochal event was initiated on Urantia approximately 37,000 years ago.

We are told that this "alien" couple was transported here from a higher world in another part of our local universe named *Edentia*, and that their presence had long been planned as a crucial feature of planetary evolution. Their overall purpose was to bring about a gigantic up-step in the genetics, culture, and knowledge of all humankind.

We further learn in this account that the so-called First Garden, the first of their two locations, lasted for about 115 years, after which a tragic default occurred. In short, we discover that, for complex reasons beyond the scope of this essay, Adam and Eve violated the divine covenant governing their mission, not unlike the biblical account. To terminate their mission on the site of the Garden, a seraph named *Solonia* appeared and ordered them and their family to evacuate.

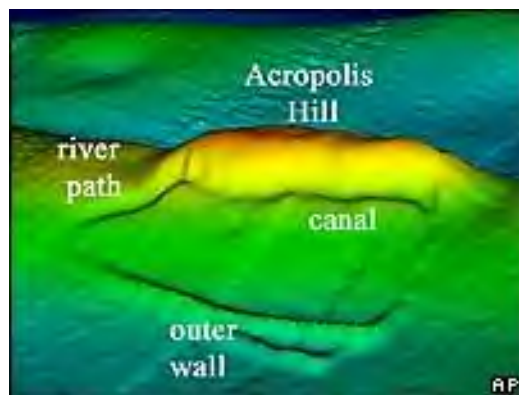
The Urantia Book characterizes the First Garden as the most beautiful place on the planet during that primitive era. But the default of the special couple forced them and their family to search for a new place, and about a year later after a long migration they arrived at what was to become the Second Garden. This location was nestled between the Tigris and Euphrates Rivers, where they continued their mission for another 400 years, now having been "demoted" to the status of human beings. This area is known as Mesopotamia, meaning "between the two rivers"—the *meso* being translated from Greek as "between."

As noted above, there exists a short list of ancient narratives about the Garden of Eden, but its actual and verifiable location is revealed in only one text. *The Urantia Book* discloses the specific location of the First Garden of Eden and also states that it disappeared about 33,000 years ago under the waves of the Eastern Mediterranean. What has long been missing from all previous narratives was the scientific proof only now available because of our two expeditions.

Using the guidance of *The Urantia Book*, aforementioned researcher and explorer Robert Sarmast launched this effort long ago when he wrote the ground-breaking book, *Discovery of Atlantis* (Origin Press, 2003), which was published previous to his two historic expeditions in 2004 and 2006. Based on his study of *The Urantia Book* and other sources, he claimed that the First Garden—which he called “Atlantis”—was likely located on the sea floor of the Eastern Mediterranean Sea between Cyprus and Syria. Sarmast referred to Eden as Atlantis because of its commercial value and also because of the paucity of name recognition of *The Urantia Book* at the time.

With the help of the bathymetric scans available at the time and the description of the First Garden in *The Urantia Book*, Sarmast and his team planned and executed the two historic expeditions. Prior to the second effort, Sarmast updated his book *Discovery of Atlantis* (First Source Publications, 2006), notably containing a foreword by famed British explorer and author Colin Wilson, who renounced his own Atlantis findings in favor of ours, stating: “I have virtually no doubt that Robert Sarmast's conclusions are correct.”

There was always some doubt among Sarmast’s team members about his ability to identify the nature of electronic images especially after the second expedition and the second publication of *Discovery of Atlantis* (First Source Publications, 2006). In that publication he correctly identified a hill, however he maintained (as seen in the image just below) the idea that a scarp on the side of the hill was a “canal,” that a minor scarp was part of a “river path,” and that the ridges hiding the waste conduit system were actually part of the “outer wall”—a feature shown later in this paper (in observation #5) that can be seen in the neck of the Edenic Peninsula, 90 miles away from the hill.



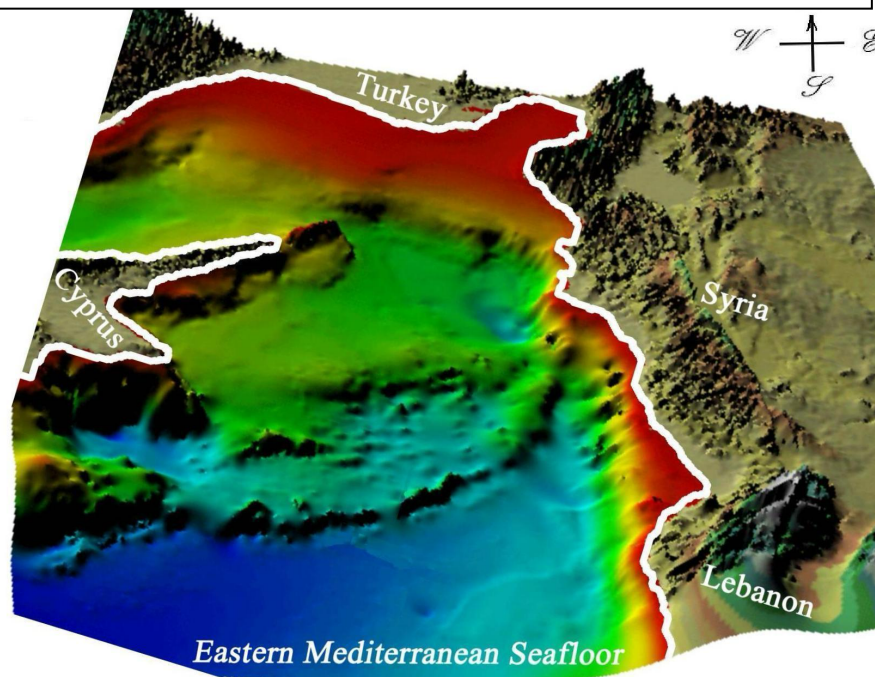
A 37,000 Year Old Mystery Solved

To guide my analysis of the facts uncovered in these expeditions, what follows are quotes from *The Urantia Book* that we believe are now substantiated by this research. This scientific validation was made possible by our use of sophisticated underwater research technology that uncovered facts we believe verify what is claimed in each UB quote.

In other words, I will provide brief quotes from *The Urantia Book* that are correlated with what I believe to be scientific verification of these very statements. These specific assertions

about the First Garden are set apart in boxed areas, and are followed by the supporting images obtained during the 2004 and 2006 expeditions along with my commentary. Please note that, in addition to modern-day computer software, the tools for this inquiry consisted of (1) bathymetric scans, (2) images obtained from the side scan sonar technique, and (3) a look under the seabed floor with a sub-bottom profiler. For the most part, bathymetric images will be featured, and these may be followed by images obtained from the side scan sonar and finally from the sub-bottom profiler.

1. Our first observation focuses on the region where the First Garden may be found. A quote from *The Urantia Book* locates it at the “eastern shores of the Mediterranean Sea.” (73:3.1).



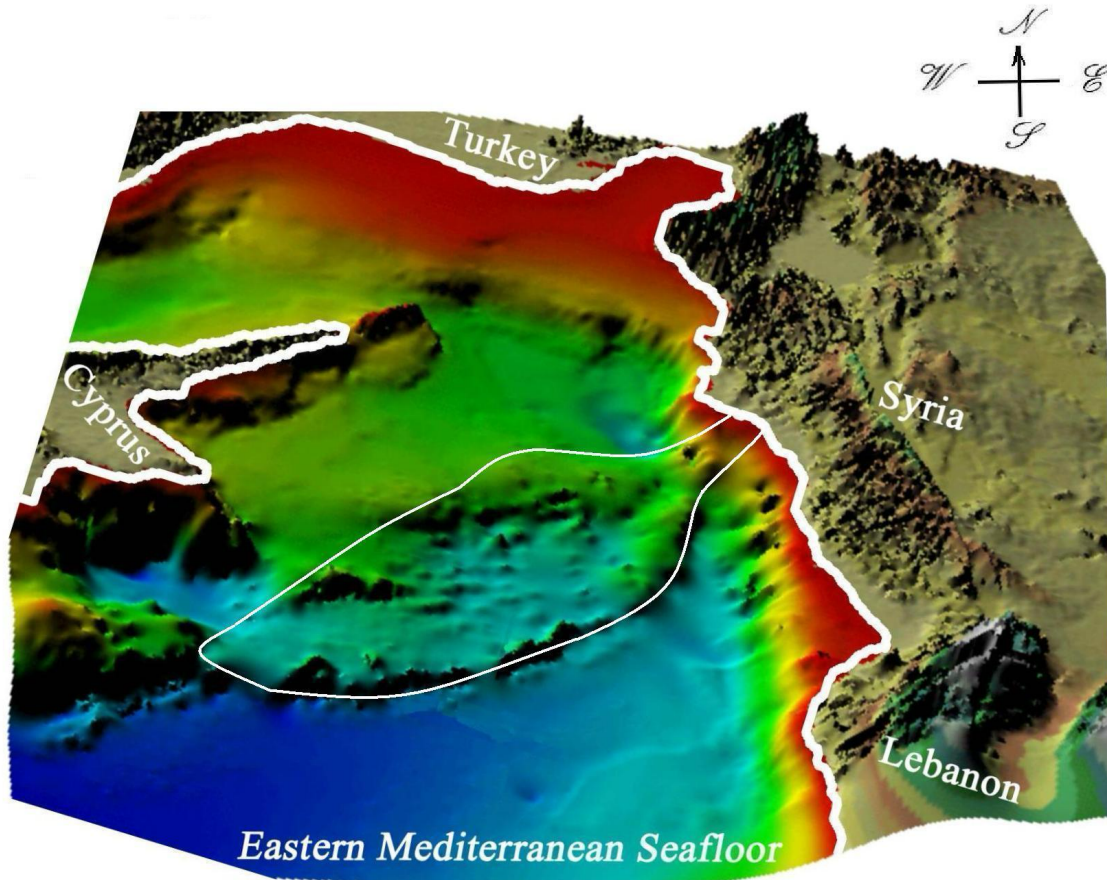
The general location of our venue is the far eastern end of the Mediterranean Sea, as shown above in this bathymetric map. Thanks to the many marine geophysicists who have studied it for decades, we are now quite knowledgeable about this region. Of special note in this connection is the work of John K. Hall, PhD. In 1970, Hall became the first marine geophysicist to work for the Geological Survey of Israel. He founded the Israel National Bathymetric Survey to map the seas around Israel, and his work continued for 35 years. In his 2005 work, *Geological Framework of the Levant*, he explains that this underwater region sits at the junction of three tectonic plates (shown in the image to the right). According to Hall, this area has been studied using the tools of bathymetry, magnetics, seismic reflection, seismic refraction, teleseismic investigations, and submarine geology based on coring, drilling, and dredging.



Other studies of the region also beckon our interest. A pioneering study published in 1978 by a Russian geologist named Ya'akov Petrovitch Malovitskiy proposed on the basis of seismic investigations that this area, known as the Levantine Basin, is actually a sunken continent. More recently, marine geophysicist Patrick Lowry (of the Scotia Group based in Dallas) generated images that presented a fairly detailed map of what I like to call "Malovitskiy's Sunken Continent." At right, Lowry's "computerized" lowering of the water level in that end of the Mediterranean (using as a template scans by Malovitskiy on his research vessel *Strakhov*), allowed the sunken continent adjacent to the island of Cyprus to emerge. It became visible when the sea level was lowered 1500 meters, or about one mile. Note: The image on the cover page of this essay displays, in the light blue margins around the land masses, the submerged lands around the entire Mediterranean that were above the water level during this earlier era.

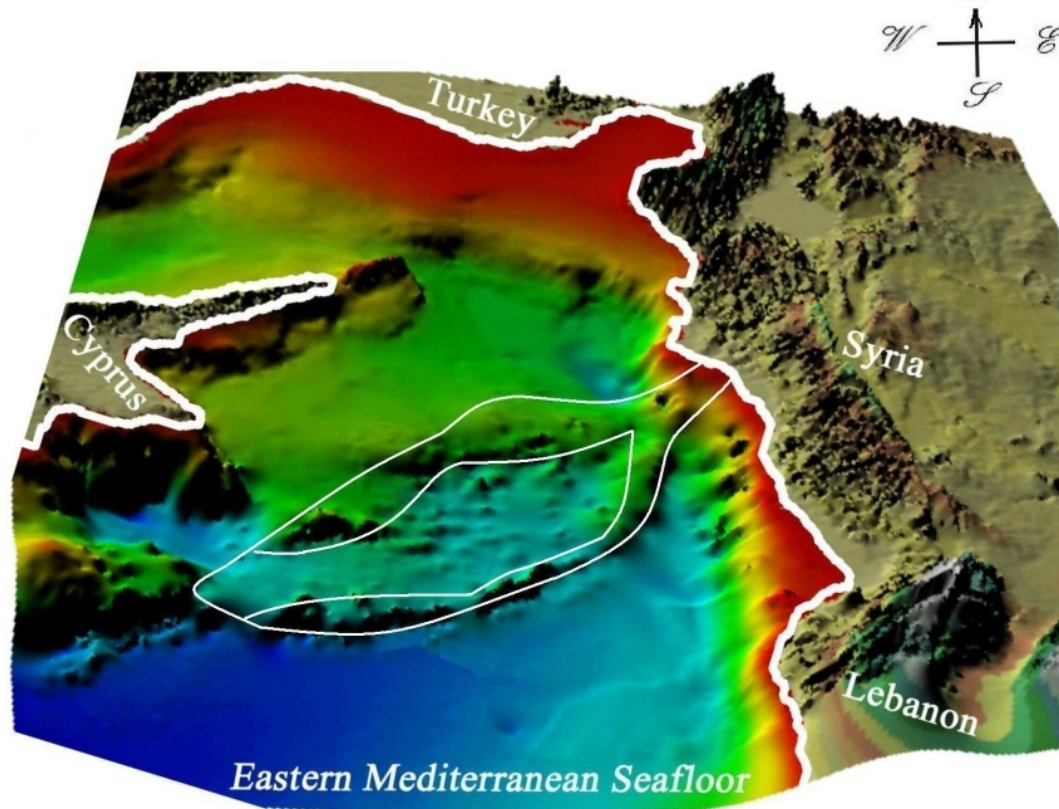


2. Our second observation is intended to locate an area that appears to fit the geographical description of the First Garden that is provided in *The Urantia Book*. We find it in this statement: “. . . a long narrow peninsula—almost an island—projecting westward from the eastern shores of the Mediterranean Sea.” (73:3.1)



According to Hebrew tradition, Moses was the author of the *Pentateuch*, the first five books of the Bible that provide the story of Eden at Genesis 2:10–14. Luke reminds us in Acts 7:22 that Moses was trained in the “wisdom of the Egyptians” as a member of the royal court of Egypt. During this time, he was probably able to study available Egyptian records and manuscripts and must have also heard oral narratives about the legend of Eden. These ideas were, in turn, very likely passed down through Moses, over many generations, to the actual authors of the biblical story of the Garden of Eden—who put this narrative into writing centuries after Moses led the exodus of the Hebrews from Egypt. Genesis does not disclose the physical location of the original Garden of Eden, but Eden presumably would not have been far from historic Egypt, Sumeria, and Israel, the cultures that birthed this legend. We believe it is most likely to be the area outlined above.

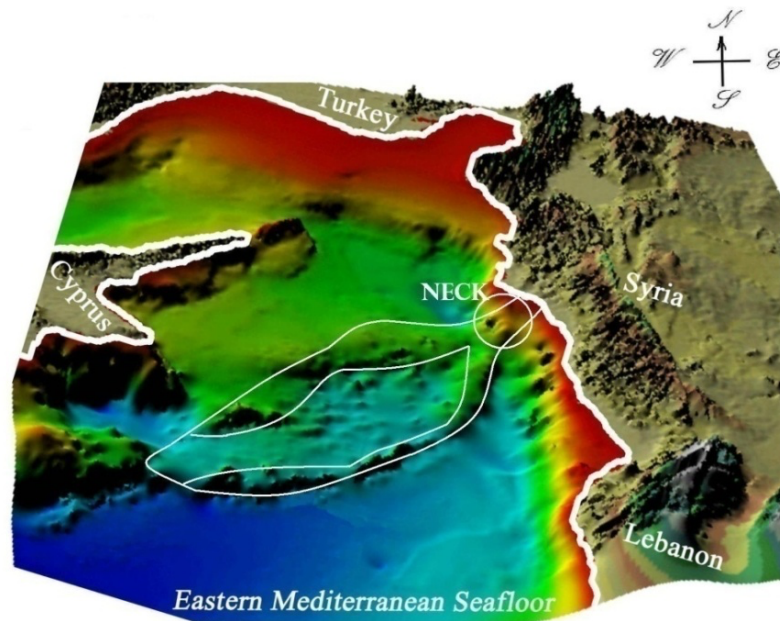
3. The third observation is to determine whether this image below matches the following quote from the same section of the Urantia text: “This Mediterranean peninsula had a salubrious climate and an equable temperature; this stabilized weather was due to the encircling mountains and due to the fact that this area was virtually an island in an inland sea.”(73:3.3)



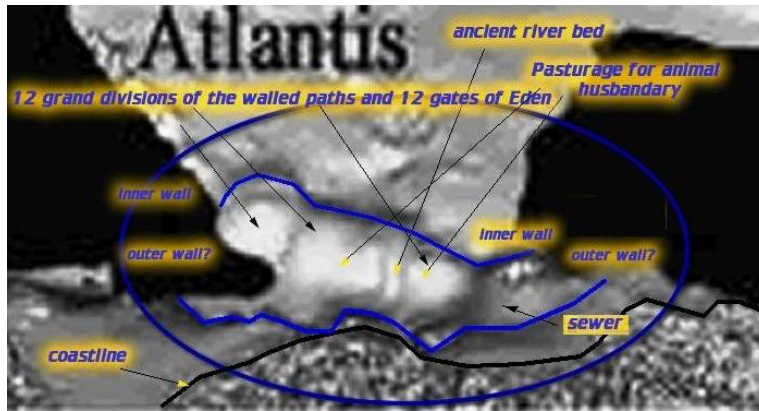
What remains of the peninsula’s encircling mountains still rim the sunken peninsula in this bathymetric scan.

4. The fourth observation is taken from a subsequent statement: “The coastline of this land mass was considerably elevated, and the neck connecting with the mainland was only twenty-seven miles wide at the narrowest point.” (73:3.4)

An obvious candidate for the neck is visible on the coast of Syria, illustrated below, with no other plausible candidates in this area. Indicators of this neck appear at the east end of the peninsula as an anomaly in the coast line. According to *The Urantia Book*, this neck offered protection for the First Garden against an invasion from the mainland.

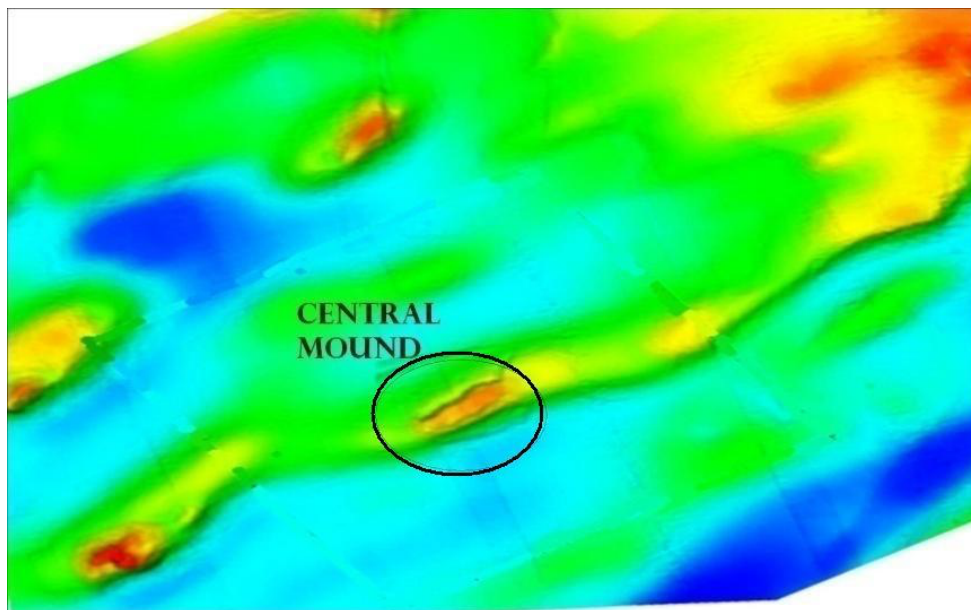


5. The fifth observation is taken from this quote: “The first task was the building of the brick wall across the neck of the peninsula. . . . A zoological garden was created by building a smaller wall just outside the main wall; the intervening space, occupied by all manner of wild beasts, served as an additional defense against hostile attacks. This menagerie was organized in twelve grand divisions, and walled paths led between these groups to the twelve gates of the Garden, the river and its adjacent pastures occupying the central area.” (73:4.2)



A close-up view of the neck is depicted above by another group of *Urantia Book* students, showing their analysis of satellite images of the presumed neck area. These researchers believe they found evidence of the two walls constructed to keep out invaders and intended to provide an area for a zoological garden. As stated, this zone housed dangerous beasts, adding greatly to the security of the Garden. Their analysis shows the plausible locations of other features mentioned in the quote, including the ancient riverbed and waste conduit system.

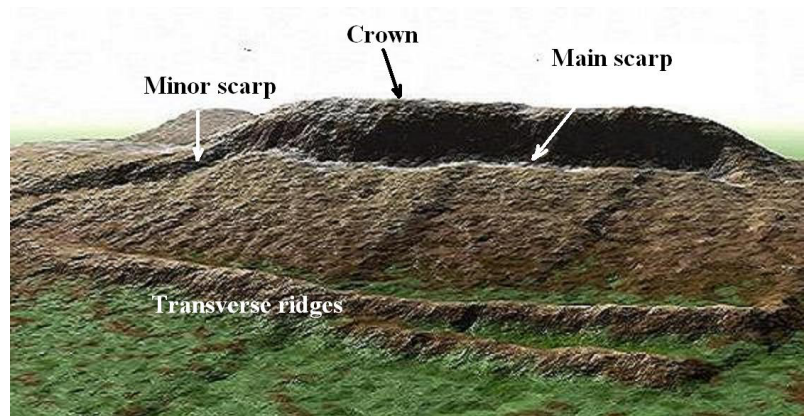
6. The sixth observation is taken from the quote from *The Urantia Book*: “This natural hill had been . . . made ready for . . . the world’s new rulers. . . . Adam and Eve were escorted to the formal reception on the great mound.” (74:2.5)



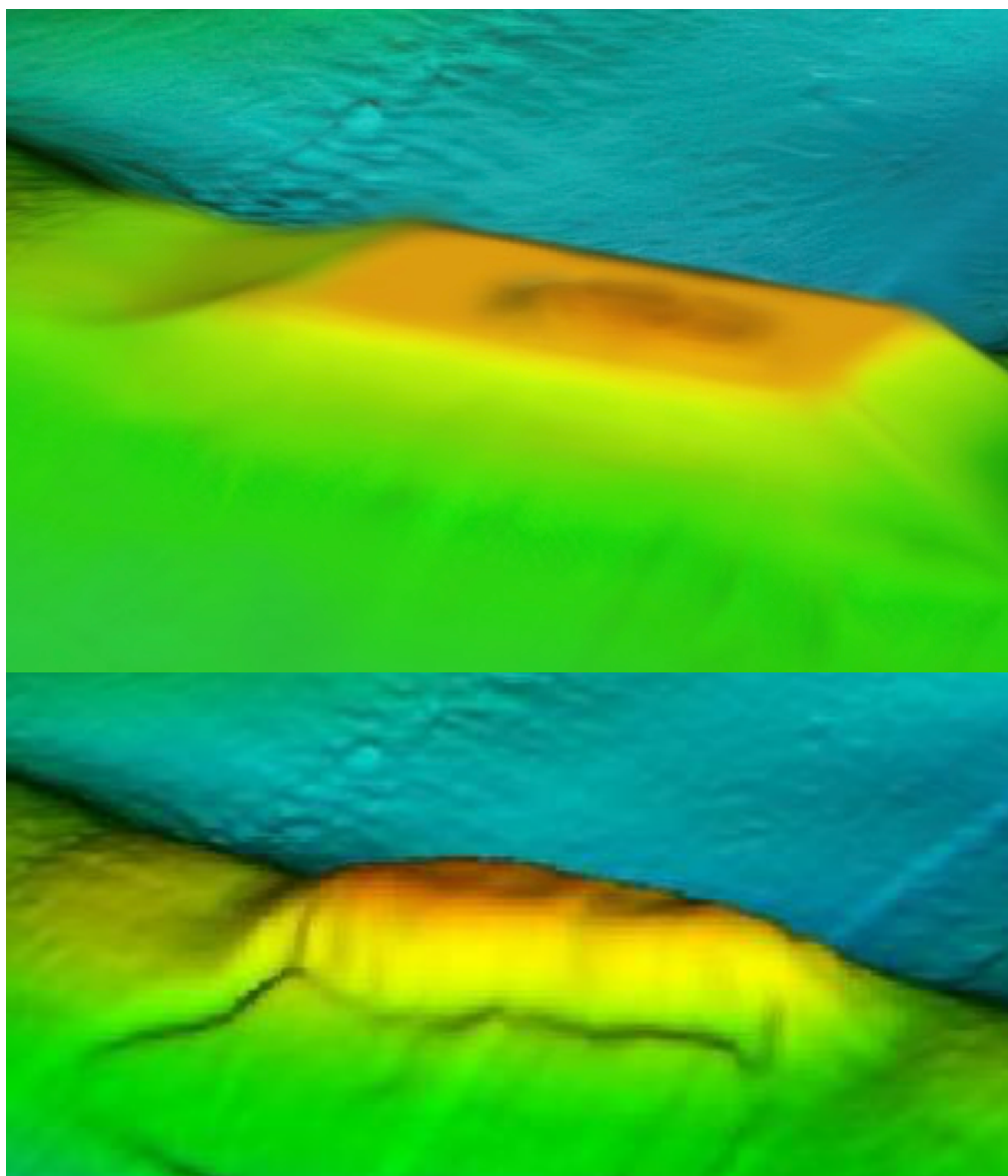


Using a computer program to get a closer look (at left) at this bathymetric scan, the great or central mound reveals certain characteristics that lead us to further verify the UB's narrative of the First Garden.

We believe this “natural hill” is, as stated, a “great mound.” We will also call it “the mount.” It appears to be located prominently in the center of the peninsula, and its characteristics are different from any other mound in the area. Some of these unique features are: circular shapes on the summit (see item 9 below); one main and two minor scarps on the side; and transverse ridge-like features at the base of the mound.



7. The seventh observation is taken from the quote: “This natural hill had been enlarged and made ready for the installation of the world’s new rulers.” (74:2.5)



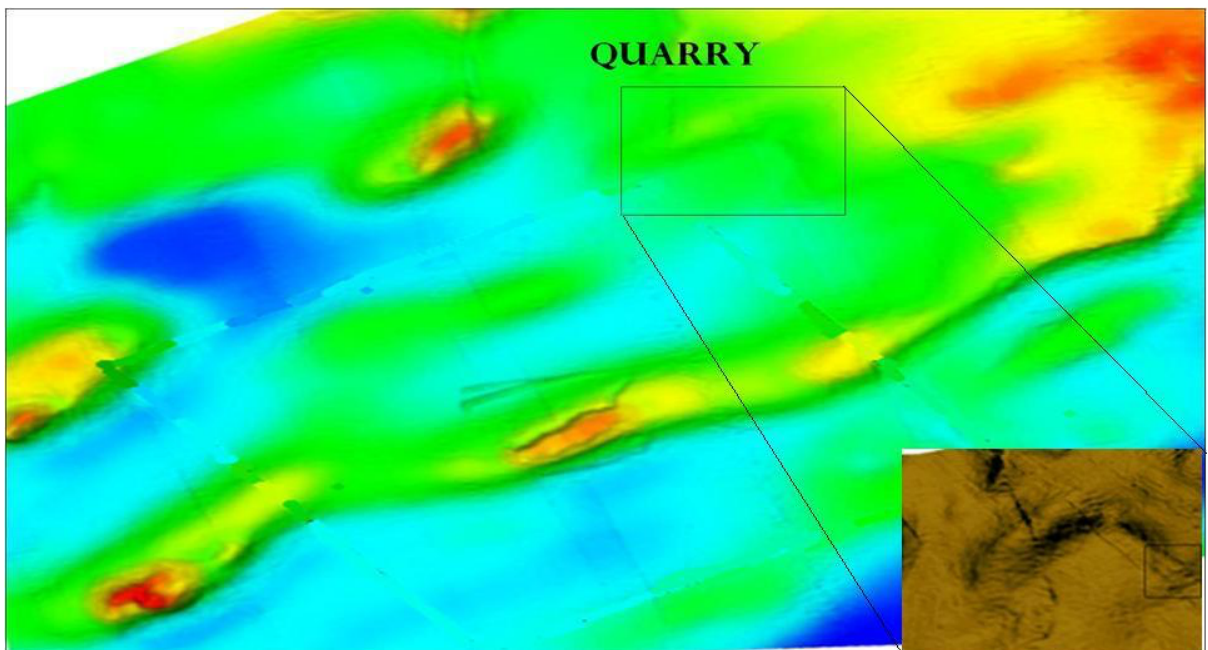
Early peoples in many cultures are known to have created earthen enhancements to natural hills, giving them an elevated surface for holding special gatherings and rituals. In other cases observed throughout the world, elaborate mounds may encompass burial sites. With sufficient material and an abundance of labor, an ordinary hill or rock outcropping can be turned into a ceremonial site by squaring up its sides and extending the length of the elevated section in one or both directions. (**Author's note:** The top image is our attempt to visualize how the enlarged central mound of Eden may have looked, just after sinking, but *before* the earthen enhancements collapsed due to underwater erosion and further tectonic activity over thousands of years; the result today is the bottom image with its major and minor scarps.)

As the millennia went by following the sinking of the Garden, seismic events, earthquakes, tremors, flooding, and erosion obviously led to the disintegration of this enhanced ceremonial mound. Logically, the earthwork enlargement erected around a natural hill would be the first of its features to falter. Violent tectonic plate activity in this area destroyed the efforts of these

Edenic mound builders.

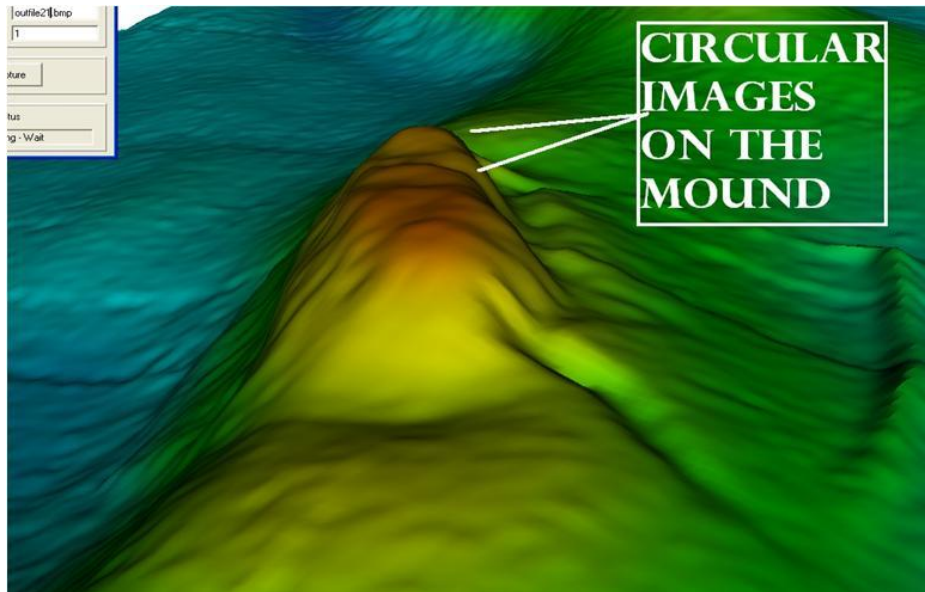
Please bear in mind that the height of all the images shown here is exaggerated by a factor of ten; the actual amount of material involved is considerably less than is suggested by the images. At the correct scale, the slump on this hill would be hardly more than a crumbled man-made dirt façade, the ancient remnants of mound-building activity.

8. The eighth observation is taken from the quote: “At the time of Adam's arrival, though the Garden was only one-fourth finished, it had thousands of miles of irrigation ditches and more than twelve thousand miles of paved paths and roads. There were a trifle over five thousand brick buildings in the various sectors,” (73:5.2)

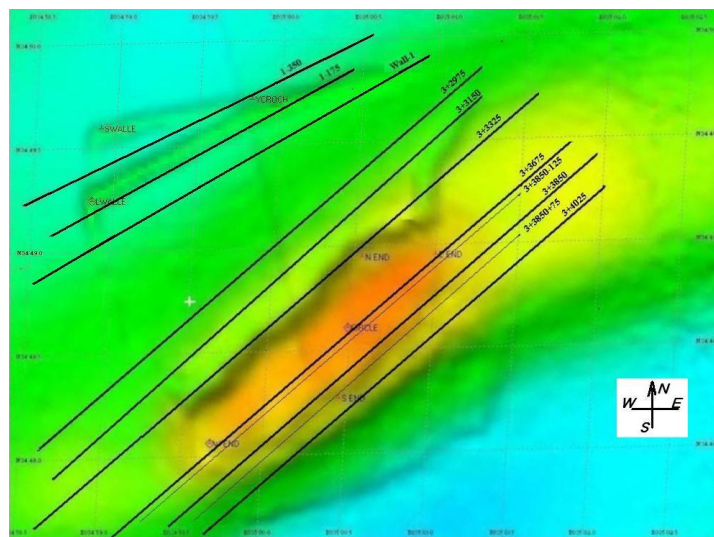


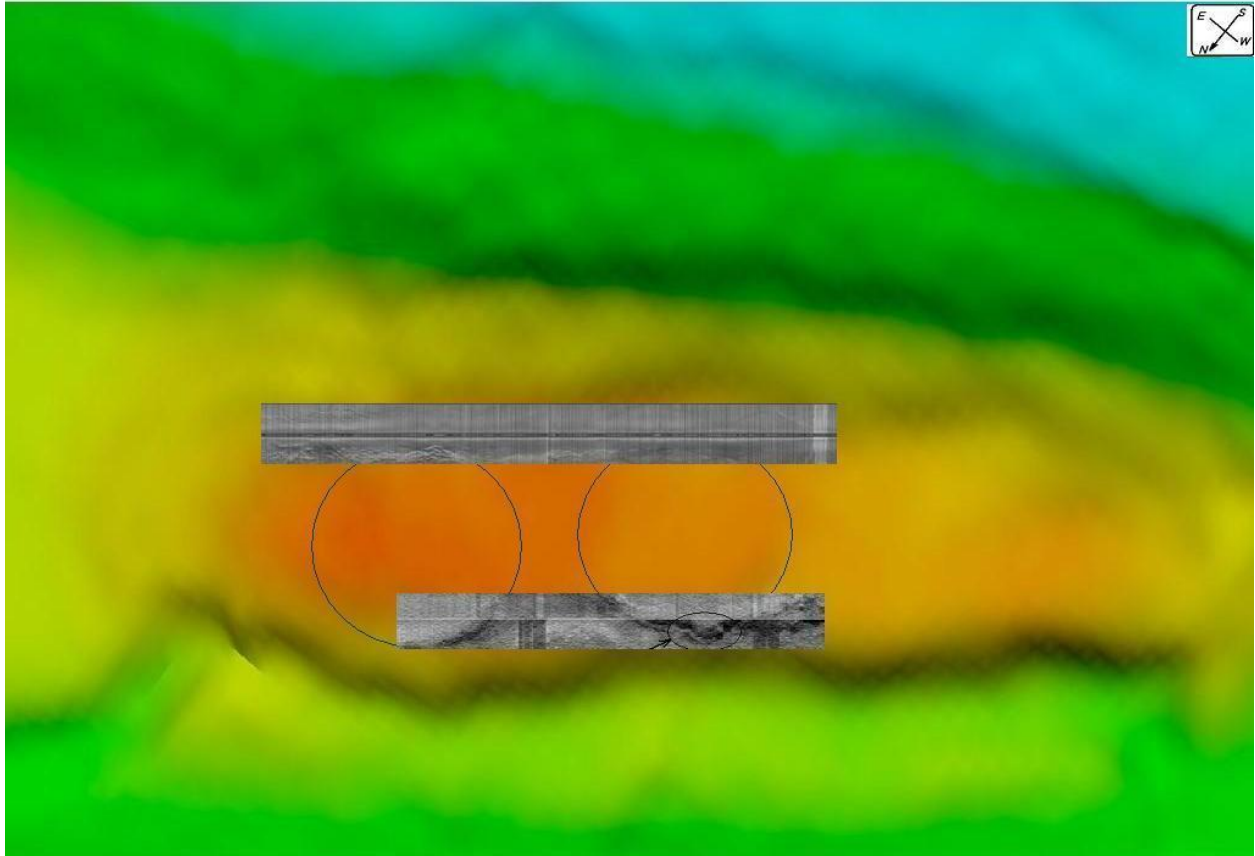
Given that there were “thousands of irrigation ditches . . . paved paths and roads. . . [and] five thousand brick buildings,” it would be instructive to locate an area that was quarried to provide so many bricks. Although not mentioned in *The Urantia Book*, it seemed justifiable to look for a region that might be the source of such a great amount of material. Although the contrast of the area deemed to be the quarry makes it difficult to see, enhancing the contrast and changing its colorization reveals what appears to be a quarry; please see the insert in the above right corner.

9. The ninth observation is taken from the quote: “The Edentia tree . . . grew in a central, circular courtyard of another temple . . . Soon after their awakening, Adam and Eve were escorted to the formal reception on the great mound to the north of the temple.” (73:5.2)

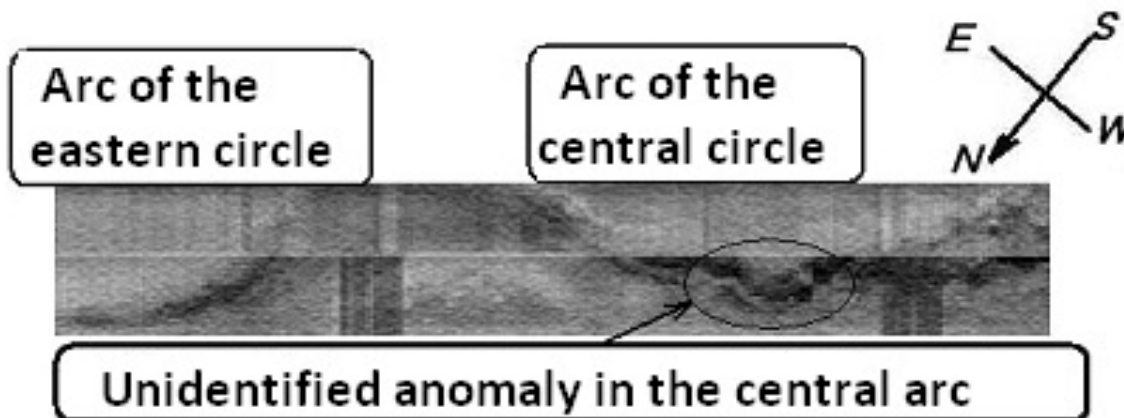


Here we depart from the exclusive use of the bathymetric scan and incorporate images from our side scan sonar for better definition. With over 72 hours of side scan images available to us, a closer picture of the ridges and the central mound was obtained, as shown above. The tracks along which the sidescan sonar signal passed over the ridges and central mound were documented, as shown just below. (These side scan sonar images are courtesy of Phoenix International.)





The side scan sonar images superimposed on the top of the central mound seem to indicate circular images on its top.-A closer look reveals what appears to be the remains of circular bases of temples.



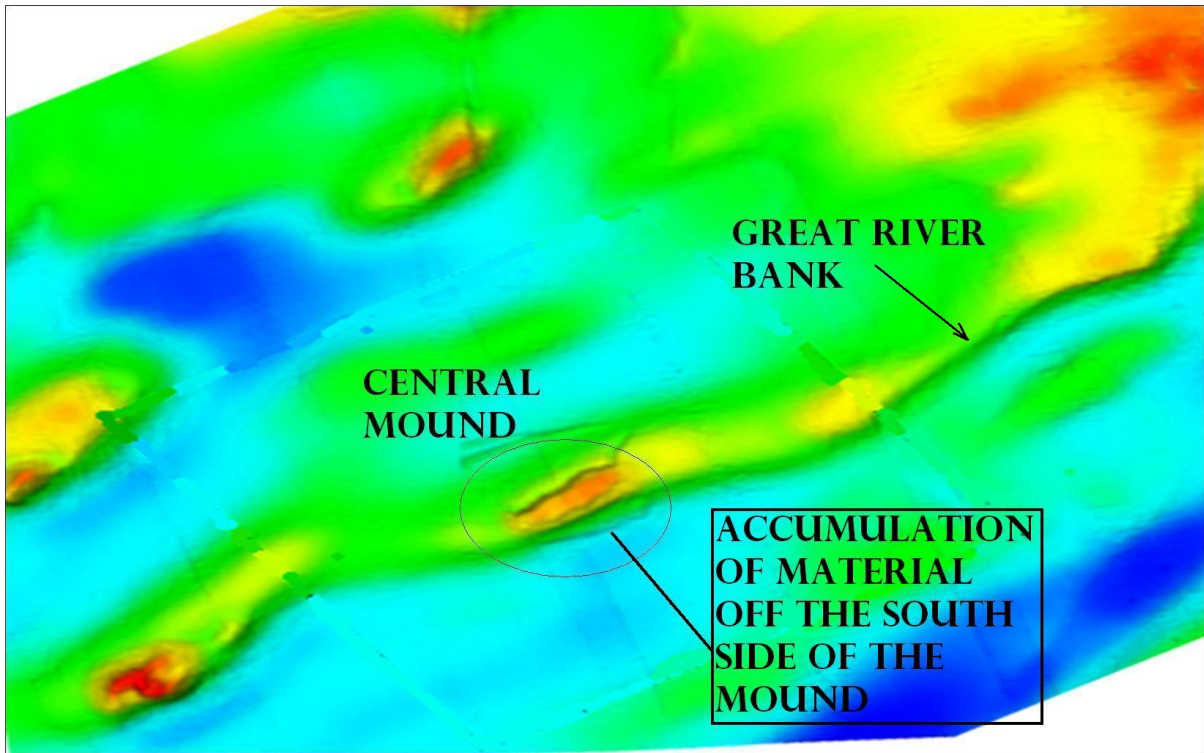
We are told of the destruction of these temples at the end of the occupation of the First Garden, but it is plausible that remnants or traces of the bases of these temples may have remained intact on the surface of the mound. And, assuming that knowledge of the architecture in the First Garden must have spread outward, it is not unlikely that the circular design of this ancient temple of India (below) may trace back to these primeval times.



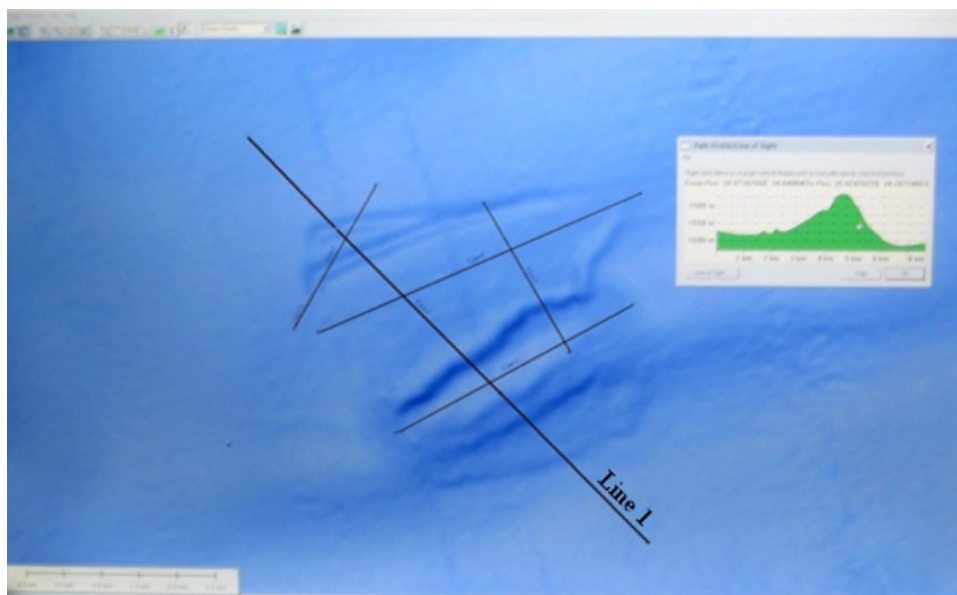
10. “The great river that watered the Garden came down from the higher lands of the peninsula and flowed east through the peninsular neck to the mainland and thence across the lowlands of Mesopotamia to the sea beyond. . . .” (73:3.4)



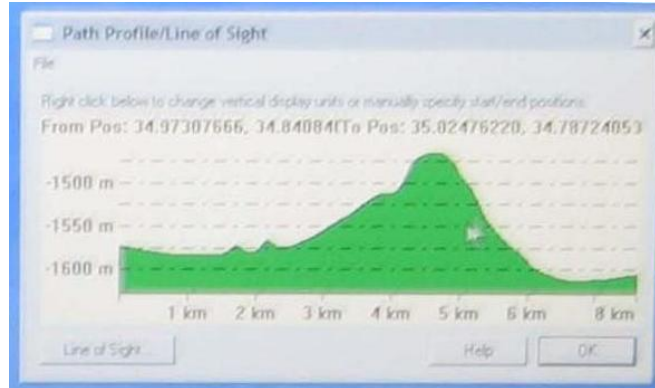
The “great river” course is depicted above in blue, and the river’s bank is seen below in this bathymetric scan, south of the central mound, as it heads toward the neck of the Edenic peninsula.



There is no UB quote to support this, but we next turn to data from the sub-bottom profiler to determine the cause of the ridges. The track below, labeled “Line 1,” indicates one of the passes of the sub-bottom profiler over the ridges and the mound. Its course starts to the northwest of the ridges, crosses over them, and continues across the central mound.

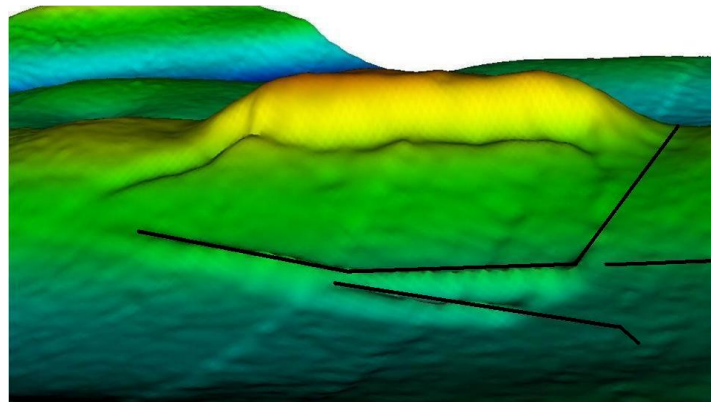


Please note the special insert to the right (with a graphic in green) that is enlarged below: this depicts, *in profile*, the seabed track over which the sub-bottom profiler traveled; on the left side one can make out the two ridges, then the central mound with two scarps in the center, and on the far right the river basin for the so-called “great river.”



11. The eleventh observation is taken from the quote: “Before the disruption of the Adamic regime, a covered brick-conduit disposal system had been constructed which ran beneath the walls and emptied into the river of Eden almost a mile beyond the outer or lesser wall of the Garden.”

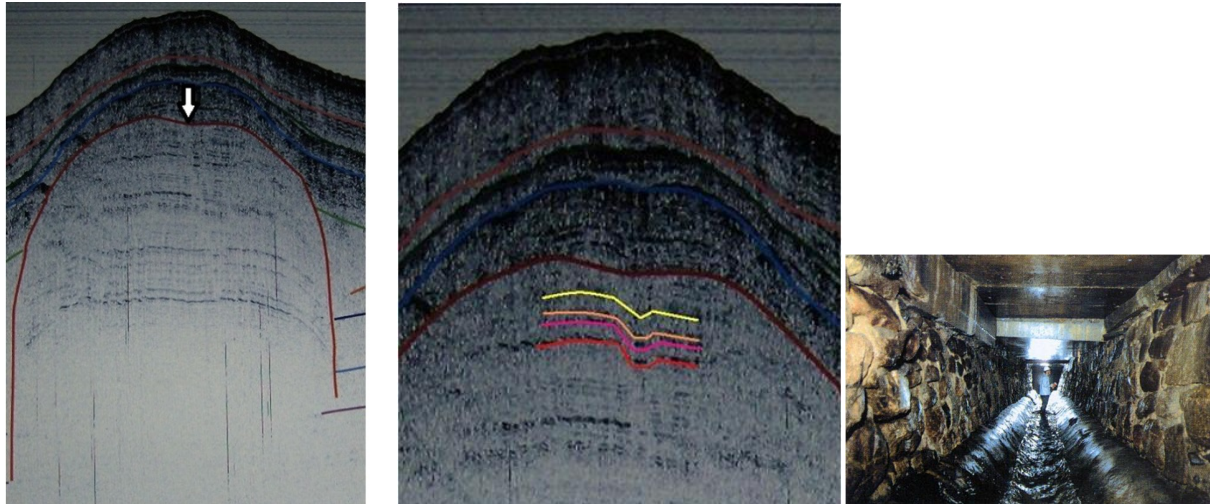
\



As the sub-bottom profiler traveled over the ridges, the strata underneath demonstrate, in my view, that the ridges were caused by an upthrust resulting from violent tectonic activity. The distinctness of ridges are due, on one hand, to the probable sinking of the entire region, which must have been accompanied by the upward displacement along the narrow paths in which the earth’s crust had been compromised by the disposal conduit. In other words, the ridges we see are caused by the weakness of the crust where the ditches were dug for the construction of a 90-mile long covered brick disposal conduit. In the first image to the left below, the dip in a stratum (at the white arrow) indicates the anomaly caused by the displacement. Stated otherwise, this line should have been dome-shaped like the strata above it. However, a search farther down, about 27 meters, shows the base of the heavy disposal conduit at the bright red line in the center image.

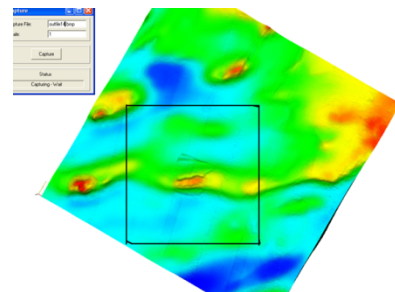
Our interpretation of this anomaly is that the weight of the disposal conduit caused the dip in the dark red stratum. For illustration, the inside of a covered disposal sewer conduit is shown at the right; the conduit created in the First Garden, which was built for a very large population of up to one million, could well have looked like this. (The sub-bottom profiler images were provided by Seatronics of Aberdeen, Scotland, now Ashtead Electronics.)

↓↓↓



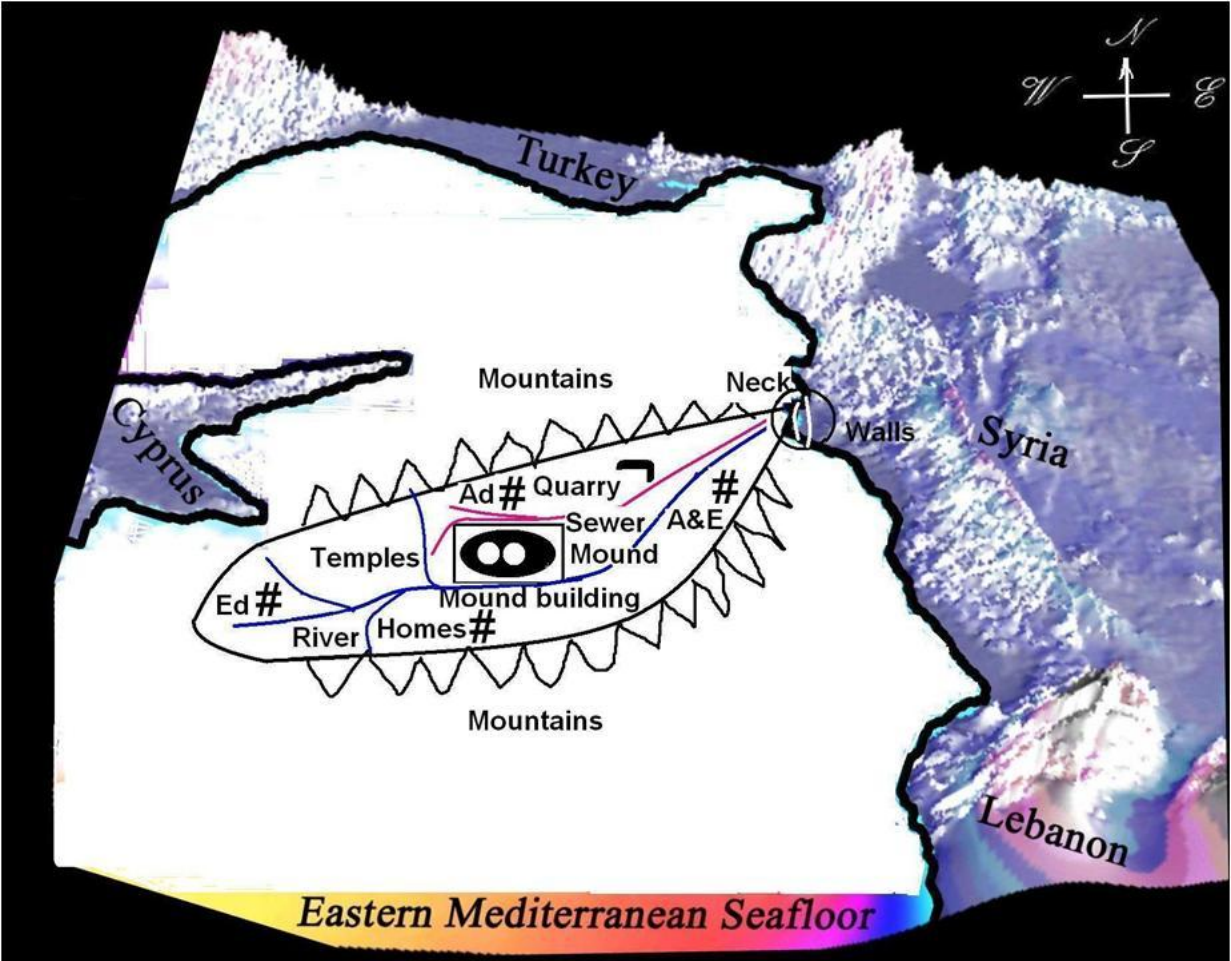
12. The twelfth observation is taken from the quote: “To the north the administrative headquarters was established; to the south were built the homes for the workers and their families; to the west was provided the allotment of ground for the proposed schools of the educational system of the expected Son, while in the ‘east of Eden’ were built the domiciles intended for the promised Son and his immediate offspring. The architectural plans for Eden provided homes and abundant land for one million human beings.” (73:5.1)

In our research, only a 15-mile square area (shown at right) around the central mound was examined due to time and budgetary constraints. As a result, none of the four sectors indicated in the quote above were actually investigated. However, we believe the *smoking gun is the humble disposal system*: the markers for the path of this brick conduit system points to each of the four sectors (as shown below).





Finally, a reader of Papers 73 and 74 in *The Urantia Book* could produce a sketch like the one seen below. The author of those papers, a seraph, seemed to either mention or allude to only those artifacts that are now known to exist today because of our research. That author did not waste words duplicating information already present in ancient texts. Nor, as far as we know now, did she mention artifacts that would never be found in this day and age.



For example of my argument above about the author of these Papers, the existence of a quarry is not mentioned in *The Urantia Book*, but there is a long discussion of bricks and a brickmaker in *Enki and the New World Order*. This famous 472-line Sumerian mythic text describes a transformation had occurred from the earlier primitive life of dwelling in caves and foraging in the woods, to a time of living in brick houses and using paved roads. This refers to the miraculous and almost instantaneous up-step in architecture and construction that was brought to earth by the figure of Enki. The invention of the “brick” is even described in this ancient text. And Enki’s master brickmaker is named as *Kulla* and the master builder is called *Mucdama*. This text also gives the impression that these people had building methods that are in use today. *Enki and the New World Order* was written on cuneiform tablets; its translation is published online in *The Electronic Text Corpus of Sumerian Literature*.



Emendation of Mythological Accounts

The old story of Adam and Eve has appeared with errors and omissions in a variety of accounts and under a variety of names. Offered here are some examples of corrections, through

emendation, in several such versions of the story of Eden. “Emendation” refers to the effort to improve or correct a text by critical editing. Once these old stories were written down, *emendation* reverses the errors and omissions that were made along the way.

As is well known, the biblical story of Adam and Eve declared this couple to be “the first man and woman.” Of course, *Urantia Book* readers now know that was not true. A clear example of emendation is found in *The Urantia Book*: “In his early teachings, Moses very wisely did not attempt to go back of Adam's time, and since Moses was the supreme teacher of the Hebrews, the stories of Adam became intimately associated with those of creation. That the earlier traditions recognized pre-Adamic civilization is clearly shown by the fact that later editors, intending to eradicate all reference to human affairs before Adam's time, neglected to remove the telltale reference to Cain's emigration to the ‘land of Nod,’ where he took himself a wife.” (74:8.8)

When investigating the story of Atlantis through a myriad of sources, the location of the Atlantis is beset with a multitude of contradictions. The story of the First Garden was obtained by the Greek, Solon, from Egyptian records and written about by Plato in the *Timaeus* and the *Critias*. By taking the notes of Solon, putting them into story form and translating the story in to various other languages, the number of errors increased. The following example is what the lack of emendation can do to a story when it starts in Greek and is translated to English. In this exercise in emendation with Plato's account of Atlantis, we focus on the Greek word *nesos*. This word can be translated either as “island” or as “peninsula” (or a meaning such as “headland” or “cape”). Since “island” was the favored translation used in transcribing Plato's work, an island has been sought for centuries, when in fact *The Urantia Book* reveals that Atlantis, or Eden, was a peninsula or a promontory of large size that should have been the object of the search.

For a third clarification by emendation, Plato described the Acropolis Hill as being “covered.” It is not clear what this means because it could be covered either by natural means such as silt or by pre-historic mound builders who, as we noted earlier, sought to “enlarge” the hill for ritualistic purposes as mentioned in *The Urantia Book*. A better translation would describe the Acropolis Hill as being “enlarged” rather than “covered.”

A fourth example of emendation comes from *Atlantis Destroyed* (1998) by Rodney Castledon, where he writes: “Solon's original text may nevertheless have read not *μεϊζων* (greater) but *μεσση* (between), meaning a ‘middle point between Libya and Asia.’ . . . Plato may have felt that the large dimensions Solon gave for Atlantis meant that the description ‘midway between Libya and Asia’ had to be a mistake and altered the text accordingly. Plato assumed that Solon's pen had slipped.” Immediately it should have seemed an error that the size of Atlantis was described as covering an area the size of two countries that are not adjacent to each other. Realizing that none of the later day writers had the benefit of a bathymetric scan of the sea floor, without that error, it would have seemed natural that a landmass between Libya and Asia Minor makes Cyprus the closest identifiable location. Another interpretation of “middle point between Libya and Asia,” points to the entrance of the First Garden by traveling along the shore from Libya to Asia Minor, along the littoral of the eastern Mediterranean, to the neck off the coast of Syria, half way between the two countries.



By example, here is what the lack of emendation can do to a story when it starts in Eden and goes to Egypt, then copied in Greek and is translated into English. By relying on a verbal description only, without emendation, the translators and historians could easily conjure up a picture of Atlantis as being a large island in the Atlantic Ocean. In this exercise with emendation in Plato's account of Atlantis, it is noted that the place of origin of Adam and Eve, Edentia, was first known as "Eden." From the ancient Sumerian to the ancient Egyptian, the word for Eden became *Aten* or *Atlen*, and is almost identical to the Hebrew word for Eden. If Solon or Plato added a Greek ending to *Atlen* it becomes *Atlentis* which morphs into *Atlantis*. In many publications, this gave rise to some authors claiming that the Garden of Eden was located in the Atlantic Ocean. Indeed they did just that as seen in one artist's conception from that description.



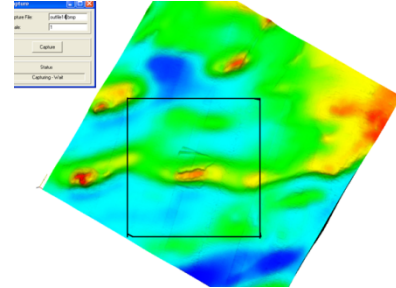
Changing a few letters in a word, such as from Atlantis to Atlantic or from gamma to sigma as in *μειζων* (greater) and *μεσσω* (between), greatly alters a story. But the act of emendation based on new facts derived by marine archeology, by more critical modern scholarship, or because of our trust in the assertions of an epochal revelation makes all the difference in the world.

Practical Applications of Our Discoveries

The main purpose of this paper has been to point out correlations between newly acquired archeological knowledge and specific statements about the First Garden revealed in *The Urantia Book*. This paper also provides a lens through which important ancient narratives can be revisited or emended. For example, the English translation of Plato's *Timaeus* and *Critias* may be revised some day with subtle changes based on our research.

Along the same lines, this paper may cause future scholars to revise the cuneiform tablet translations now found in *The Electronic Text Corpus of Sumerian Literature*. All sorts of popular publications based on our discoveries will also, for the first time, give the average reader access to an updated, corrected, and nonmythic understanding of the First Garden—thanks to research guided by epochal revelation.

One current example is the children's book: *Little Vianne Discovers the Garden of Eden* (2026) by Urantia Book student Kerri Jones Blache, one of our collaborators. This book is part of an educational series that will help children (from 5 to 8 years old) learn about enchanting traditions and customs worldwide.



In conclusion, here is a list of the most significant practical applications of our findings:

1. It seems reasonable to set aside competing theories based on the Urantia revelation that ignore the compelling evidence presented above.
2. Second, to generate a third voyage plan and execute that plan. Today we have the benefit of a new generation of far more sophisticated underwater equipment that will enable us to discover, in much higher resolution, even more features of Eden revealed in *The Urantia Book*. Recall that the detailed data we have discussed only covered details inside a 15-mile square area centered on the central mound. A wider investigation with better equipment will reveal fascinating discoveries on other parts of the peninsula. Although there is about 12 meters of silt in the lower region of the Levantine Basin, the scans from our voyages suggest that the top of the central mound may be current-swept to expose artifacts in and around the summit of the central mound.

3. We also envision that a documentary based on our research could be produced by Joshua Gates, seen here after a chance meeting with several of our associates that led to his interest in our work. Gates hosts the popular series “Expedition: Unknown” at the Discovery Channel.

4. One final application of our findings points to the need for a formal effort to preserve this peninsula for further investigation. I believe it can now be classified as a World Heritage site, which would provide protection from commercial oil exploration interests using such methods as coring, drilling, and dredging.

Thanks for your engagement with our findings. For more information about this study, refer to *The Eden-Atlantis Project*, available on Amazon, or contact the author, Captain Robert Bates, at this address batekmarine@aol.com. Also, please visit our website: <http://edenatlantisproject.org>.

